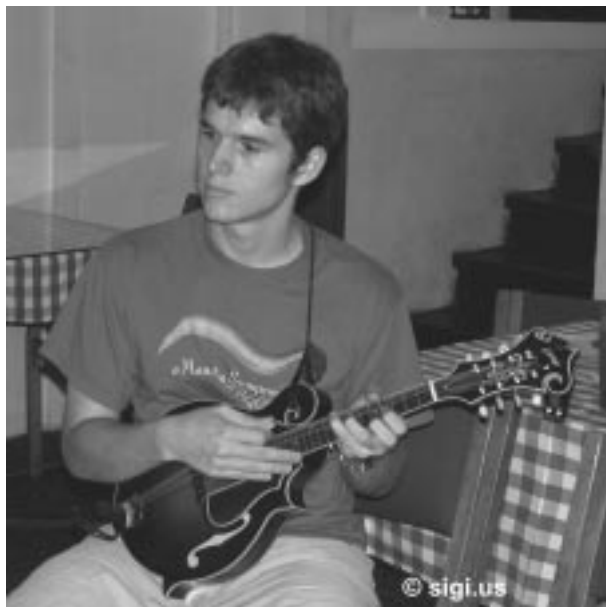


# Central Texas Bluegrass Bulletin



Volume 27  
Number 8  
August 2005

## 2005 Band Scramble



We'd like to offer a big thanks to Eddie Collins for the great job he did as MC, and also thanks to all the musicians who came out to play, everyone who participated in the garage sale by donating and buying items and everyone that came out to listen. We couldn't have done it without you. Thanks again and we'll see everybody again at the next band scramble and garage sale.



photos by Sigi Field



For information on CTBA membership and activities, contact:

**Central Texas Bluegrass Association**  
P. O. Box 9816

Austin, Tx, 78766-9816

512-261-9440

email: ctba@centraltexasbluegrass.org

www.centraltexasbluegrass.org

CTBA is a non-profit, tax-exempt

501 (c) 3 Texas corporation

**RANDALL'S GOOD NEIGHBOR PROGRAM**

The CTBA number for this program is 9735. If you sign up, Randall's will donate a percentage of your purchases to the CTBA!

**OFFICERS**

**President**

Steve Zimmet  
thegarage@swbell.net

**Vice President**

Greg Jones  
jonzee2@excite.com

**Treasurer**

Russ Gunn  
raus7070@sbcglobal.net

**Secretary**

Steve Davidson  
sdavidson@rtg-texas.com

**DIRECTORS**

John Hood  
Jamie Stubblefield  
Jamie5011@aol.com  
Jane Laughlin  
mejane@yaho.com  
Steve Davidson  
Howard Hackney  
soapycows@hotmail.com

**COMMITTEES**

**Beginner/Intermediate Jam**

Stephen Mangold

**Membership**

Jane Laughlin

**Webmaster**

ctba@centraltexasbluegrass.org

**Central Texas Bluegrass Bulletin**

Editor: Howard Hackney

*Editor's Note: All writers, artists, and photographers retain all copyrights over any work submitted to the Central Texas Bluegrass*

*Bulletin.*

## CTBA Artists and Bands Booking Information

**Austin Lounge Lizards:** Tom Pittman 512-476-3991

**Austin Mandolin Orchestra** Joel Hobbs 512-833-5529

**Blazing Bows:** Mary Hattersley 512-873-8925

blazingbows@lycos.com

**BuffaloGrass:** Don Inbody, (512) 295-6977, don@inbody.net

**Cedar Break:** David Wilson 830-257-6043

cedarbreakmail@yahoo.com

**Cooper's Uncle:** 512-736-2644, coopersuncle@hotmail.com

**Cumberland Gap:** Gary Potter 979-690-6951 gdpotter@startel.net

**Eddie Collins:** 512-836-8255 tuneman@texas.net

**The Gray Sky Boys** Tom Ellis 512-442-1000

**Hard to Make a Living:** John Hood 512-376-7767 johnhood@grande-com.net

**Manchaca All-Stars:** B. Buchanan 512-282-2756

manchacaallstars@email.com

**Max Zimmet** Max Zimmet 512-327-6023

**Red Eye:** Randy Collier 512-423-70918 randyc@comp-utility.com

**Sarah Jarosz:** Sarah Jarosz 512-847-6104 mjarosz@austin.rr.com

**Sieker Band:** Rolf and Beate Sieker 512-733-2857

thesiekers@aol.com

**Stayton Bonner:** 512-431-8443 stayton@staytonbonner.com

**3rd Generation Gospelgrass** Brenda McGlothlin 830-914-4810

threenerationgospelgrass@juno.com

**Twangzilla:** Cory Hicks, 512-563-5584, info@twangzilla.net

**Wayward Pony:** Dale Albright 512-267-4969 dale-

mandolin@austin.rr.com

**The Ledbetters** Spencer Drake 210-698-7062 kthdrake@wmcon-

### MONTHLY ADVERTISING RATES

Full Page 7"x9"	\$30.00	1/4 page 3"x4"	\$12.50
1/2 Page 7"x4"	\$15.00	1/8 page 3.5"x2"	\$10.00

Take \$10.00 off above rates if you are a business member.

Copy deadline is the 20th of the month.

Publication on or about the 1st.

Contact the editor at soapycows@hotmail.com for more info.

**The Central Texas Bluegrass Bulletin** is published monthly by the Central Texas Bluegrass Association. Members of CTBA receive the Bulletin as a member service of the Association. Subscription rate for additional copies and for non-members is \$15.00 per year. Contact the editor for advertising rates and information. Copyright © by Central Texas Bluegrass Association.

**Publisher's Copy Protective Clause:** Advertisers assume liability for all contents of advertisements and from any claims arising therefrom. We reserve the right to reject advertising for reasons of space availability or publication standards.

## Willa Porter Scholarship Update

We'd like to give a big thanks to Willa Beach Porter's dad, Renfro Ross Beach for making a donation of \$500 in memory of his daughter towards the CTBA Music Scholarship. We are

honored to continue to name the scholarship after Willa.

Bobby Giles wrote a song for Willa. We are happy to print the lyrics for you here.

### Behind the Moon

*by Bobby Giles*

- Verse 1

Can anybody tell me, Can anybody see  
Why anyone would leave here, 'til all her pain was free  
Who's gonna play that fiddle, who's gonna sing steel rails  
Who's gonna solve the riddle, only Miss Porter can tell

- Chorus

She had so many questions; she found some answers too  
Guess her heart won't ache no longer, up there behind the moon

- Verse 2

We'd talk of Amarillo, a new wine colored dress  
She used to have a fellow; he ain't the cause of this  
There was no one to blame, she found out at the end  
Somehow a shooter bore her name  
When death became Miss Porter's friend

- Chorus

She had so many questions; she found some answers too  
Guess her heart won't ache no longer, up there behind the moon

- Break

- Verse 3

Somebody play that fiddle, somebody sing steel rails  
She finally solved the riddle  
When Miss Porter rang heaven's bell

- Chorus

She had so many questions; she found some answers too  
Guess her heart won't ache no longer, up there behind the moon



## Bluegrass winning popularity contest over blues

*BY STEVE MORSE*

When the bluegrass outfit the Johnson Mountain Boys broke up in the early '90s, it complained that bluegrass was in much less healthy shape -- commercially speaking -- than another American roots genre, the blues. If the group had only known what was ahead, maybe it would have stayed together.

Since then, the two genres have gone in different directions -- bluegrass to the top of the mountain, blues to the bottom.

Bluegrass has forged new stars from Alison Krauss (who performs Wednesday with Union Station at Ravinia) to Nickel Creek and King Wilkie. But the blues has not sustained new talent -- something that's hard to do when blues clubs are closing their doors.

"The drive and rhythm of bluegrass was an instant hook for me," says King Wilkie's Ted Pitney, a twentysomething picker who fell in love with the music when backpacking around Australia with a couple of bluegrass tapes. He and bandmate Reid Burgess attended Kenyon College in Ohio, where they skimmed the radio dial to find something different -- and it was bluegrass.

"There's a swing to it, it's organic, and it's a far cry from the industrial pop and rock that is out there," adds Pitney.

Clearly, bluegrass also received a bigger boost from the success of the "O Brother, Where Art Thou?" soundtrack (which has sold close to 7 million copies) and "Cold Mountain" soundtrack than the blues did from Martin Scorsese's PBS documentary series "The Blues" two years ago. But that only tells half the story. The rest is that bluegrass is now perceived as cool and hip, while the blues is often viewed as old-fashioned.

"Years ago, bluegrass had more of a hay-bale image, but the level of sophistication has gone up dramatically," says Ken Irwin, co-owner of Cambridge, Mass.-based Rounder Records. His label has seen bluegrass sales shoot up (Krauss and her band Union Station sold 70,000 copies of their last album in its first week of release), while sales of blues albums rarely surpass 20,000 copies.

"Blues records are selling 20 percent of what they were in the late '80s and '90s," says Rounder vice president Scott Billington.

"I played in a lot of rock bands and was a music major in college and focused on jazz," says King Wilkie's Pitney. "But bluegrass grabbed me. And we don't want to pretend that we're Bill Monroe [the father of bluegrass] back in 1946. We want to translate it into our own time and voice."

That's what Ricky Skaggs -- who won this year's Grammy for best bluegrass album -- has

been doing for years. "I'm 50 years old. If I were 50 in country music, they'd be putting me out to pasture. But in bluegrass, you cross into 'legend' status," Skaggs says with a laugh. "Not that I'm putting myself in that category."

As commercial country music has become more about airbrushed artists and less about artistry, people have gravitated toward bluegrass, Skaggs says. "Country has been losing its center and is looking more toward pop and VH1," he says. "It's more about looking great on camera than it is about music. But with bluegrass, in order to survive, you have to be good. There's a higher talent level."

Meanwhile, the blues world is foundering. "The blues is in a rut. There's no doubt about it," says Rounder's Billington. "I think it's going to take the right artist to fan the embers again."



### Eddie Collins CD Release Parties at The Live Oak Coffee House and Cactus Cafe

Eddie Collins kicks off the Live Oak Coffee House Fall concert series with a CD release party for his new CD, Golden Wings, which includes 13 original songs written by Eddie. The concert will be on Friday, August 26th, at 7:30 with doors opening at 7:00. Performing alongside Eddie will be several of Austin's best bluegrass musicians, including Mike Montgomery on fiddle, Mark Rubin on bass and Paul Sweeney on mandolin. Sarah Jarosz, who recently performed at the CMA awards show with Earl Scruggs and Ricky Skaggs, will open the show. Tickets can be purchased at the door for \$10 with 25% of the proceeds going to the National Scoliosis Foundation. This show is smoke- and alcohol-free and is presented at the Live Oak Unitarian Church in North Austin, 3315 El Salido Parkway - .2 miles East of the intersection of Anderson Mill and Hwy 620. Contact Scott Osborne for more information. (512) 261-6373.

A second party has been planned at the Cactus Cafe on the UT campus following a similar format as the first with many additional special guests. The exact date had not been confirmed at press time. It will be on a Tuesday evening, either August 30th or September 13th. Check Eddie's website for updates. [www.eddiecollins](http://www.eddiecollins)

**SALMON LAKE PARK**

*Where the Bluegrass is Best!*

**Floyd & Fannie  
Salmon**

P. O. Box 483



**936-687-2594**  
**936-687-4141**  
Summer Afternoon  
Hours Only

Grapeland, TX 75844

**The Austin Center for the Treatment of  
Obsessive-Compulsive Disorder**

Bruce Mansbridge, PhD  
*Director*

<http://austino.cd.com>

*Building 5, Suite 513  
4407 Bee Cave Road  
Austin, TX 78746*

*mansbridge@austino.cd.com  
Voice/fax 512 327-9494  
Mobile 512 626-3900*

Restaurant
**Artz  
RIB  
HOUSE**
Catering

2330 South Lamar Blvd.  
Austin, Texas 78704  
(512) 442-8283  
Fax: (512) 442-9342

[www.arttribhouse.citysearch.com](http://www.arttribhouse.citysearch.com)  
e-mail: [arttribhouse@juno.com](mailto:arttribhouse@juno.com)

## The John and Rudy Dopyera Collection

Few instrument makers represent the American Dream quite as completely as these two inventors, innovators, marketers, and all-around creative force behind both the National and Dobro companies.

The Dopyera brothers were born in what is now Slovakia, and came to the U.S. with the wave of Eastern European immigrants around the beginning of the 20th century. (In fact, the word “Dobro” is both a contraction of “DOPYERA BROthers” and the word for “good” in their native tongue.)

Engineers, tinkerers, businessmen, and accomplished musicians (their family had a history of violin making going back centuries, and Rudy was by many accounts an exceptionally talented and soulful Gypsy-style violinist), the two Dopyera brothers



combined their Old World skills and traditions with the booming technology and futuristic tastes in art of pre-WWII America. Who else thought that spun aluminum might be a good material for sound projection? Who else engraved beautiful Art Deco designs on the bodies of their guitars? Only the Dopyeras.

The unusual, experimental, and mostly one-of-a-kind instruments in this collection – John’s unusual (and spectacular sounding!) resophonic violin, Rudy’s balalaika-inspired Lullabyka, the Art Deco-influenced steel body uke and tenor guitar, even the actual workbench on which John perfected the fabled tri-cone resonator system – are uniquely American (and uniquely Dopyera) innovations.

There’s no doubt that many of the great blues and slide guitar players owe their careers to these radical innovations of the Dopyeras; and there’s no question that both country and bluegrass music developed a whole new voice after the introduction of the Dobro. Because of the Dopyera brothers, American instruments – and American music – have never been the same.

Here are some web references:

<http://www.nationalguitars.com/part1.html>

<http://www.gibson.com/products/oai/dobro/story.html>

Rudy Dopyera passed away in 1978 and left his instruments and workshop to brother John, at that time 85 years old. When John passed on in 1988 the combined instruments and contents of the two workshops were packed up and put in storage by the family. Family members have now decided to sell the existing collection, plus the historic workbenches on which the brothers did much of their early work.



# CALENDAR

## Local shows

## FESTIVALS & EVENTS

### August

Aug. 12 -- Friday - Manchaca All Stars at the Manchaca Firehall (on FM 1626 just west of where Manchaca Rd. dead-ends into FM 1626) - 7:30pm until 10pm (or so)

Friday, August 12th, 7:30 – 9:30 P.M: Eddie performs with the Bluegrass Vatos backing singer-songwriter, Danny Santos. Playing mandolin, guitar and banjo. Artz Ribhouse, 2330 S. Lamar. 512-442-8283.

Sieker Band, ArtZ Rib House, Saturday, August 13th starting at 7.30 pm

Friday, August 26th: CD Release Party for Eddie Collins' new CD. Season opening event for the Live Oak Coffeehouse Concert series, a great non-smoking, non-alcohol concert environment. Live Oak Unitarian Church, 12310 RR 620, Cedar Park, TX. Sarah Jarosz will open the show. In addition to a core group of Mike Montgomery on fiddle and Paul Sweeney on mandola

### August

Arbuckle Mountain 6th Annual Bluegrass Festival

Start: 09/11/2005

End: 09/17/2005

Location: Between Wynnewood & Davis Exits Take I-35 to Exit 60 (Ruppe Road) turn East & Follow signs 1 1/2 miles

Admission Thur \$10 Fri & Sat \$12 a day or 3 day pass \$30 children under 14 free

Bands Featured Lost Highway ;Sat.Only Flint Hill Special;T/F Boggy River Bluegrass; F/S White House Harmony;Fri.only The Stephen's Brothers;F/S Triple L Bluegrass;T/S Mountain Creek ;T/F High Ground ;F/S Saltgrass;F/S Saggy Bottom Bluegrass ;Thur Only Lonesome Prairie;T/S

Allen or Rosemary Bowen Rt. 2 Box 216 Wynnewood ,OK 73098

405-665-5226 or 405-238-4340 or e-mail rosemary@brightok.net

Artz Rib House, 512/442-8283, www.artzribhouse.com

Join ctba today

*A one year membership includes a subscription to the Central Texas Bluegrass Bulletin.*

*Business membership includes a business card advertisement in each issue.*

*Band membership includes a Booking Info listing.*

Name \_\_\_\_\_ Date \_\_\_\_\_  
Address \_\_\_\_\_  
City \_\_\_\_\_ State \_\_\_\_\_ Zip \_\_\_\_\_  
Phones: Home \_\_\_\_\_ Work \_\_\_\_\_ Fax \_\_\_\_\_  
Email \_\_\_\_\_ Occupation \_\_\_\_\_

**PLEASE NOTE THAT LISTENERS AND PICKERS ARE WELCOME TO JOIN**

Please contact me about volunteering q Please send the Bulletin as q PDF fileq Hard copy

Note that the following amounts are the minimum contribution amounts.

Type of Membership: q New q Renewal q Individual (\$20) q Family (\$25) q Band (\$25)

q Patron (\$30) q Business/Sustaining (\$50) q Student (\$15)

For Family, Band, and Patron Memberships, please append a list of the members of your family or band.

q I do not want my name and contact information included in a CTBA Membership Directory or in the CTBA mailing list, which may be exchanged with other music and arts related organizations.

**Mail your check and application to: CTBA P. O. Box 9816, Austin, TX, 78766-9816**

*Contributions to CTBA are tax deductible as allowed by Internal Revenue Service Code Section 501 (c) (3).*

# CTBA AREA ONGOING EVENTS

## AUSTIN AREA, CTBA

• **Beginner/Intermed. Jam**  
1st & 3rd Thursday 7-9 pm  
Steve Mangold 512-345-6155

• **CTBA Jam Session**  
Sunday at Artz Rib House  
2-5 pm, 512-442-8283

**ARTZ RIB HOUSE**  
• **Live Bluegrass Show**  
2330 S. Lamar, Sunday 6:00 pm  
512-442-8283

**AAAMS JAM**  
• 2nd + 4th Wed, Anderson Mill  
Baptist Church, 10633 Lake Creek  
Pkwy 258-5843,  
Leander Jam, Friday, 7-9, 260-8838

**AFTM**  
• **Contra Dance**  
3rd Sat., Lutheran church at 3501  
Red River 8-11 pm, \$7, 462-0511

• **AFTM Jam Session**  
2nd Sun at Threadgill's South  
Barton Springs & Riverside, 2pm

**MOTHER EGAN'S**  
7-10, 2nd and 4th Wednesday's,  
512-478-7747, or 512-289-6086

**SMITHVILLE**, • **WayStation Opry**  
1st Sat, 205 NE 2nd, 6 pm, Steve  
Boatright, 512-272-8008

## **BRYAN/COLLEGE STATION**

• **Jam Session**  
Monday: 6:00 to 8:00 pm  
Buppy's Catering 979-690-6951

• **Jam Session and BG Show**  
2nd Sat: Jam-4pm, Show-7pm  
Wellborn Com. Ctr. 979-690-6951

**CEDAR PARK**, J&J's BBQ, 1st and  
3rd Friday, 6-8:30 pm. 260-8838.

## **CHRISMAN**

• **Jam**  
3rd Sat: 7-10 pm  
Chriesman Community Center  
Don Cook 979-567-0573

## **CLEBURNE**

• **Show & Jam**  
3rd Fri. Cleburne Civic Center,  
1501 W Henderson (Hwy 67) 7 pm,  
\$3 www.geocities.com/ntbbbluegrass

## **FLATONIA**

• **Jam**  
4th Saturday  
Thumper's Roadhouse Grill  
Stuart & Diane Raef 361-865-2154

## **GARLAND**

• **Bluegrass on the Square**  
Sat- March thru October between  
Main and State Sts. at 6th, 7:30-  
1 am Jim Miller 972-276-3197

## **GEORGETOWN**

**Georgetown On the Square Jam**  
• 2nd Sun, 1 pm, **wkly jams Tues.**  
contact Jon, 512-869-8076  
<http://insta-web.com/bluegrass>

## **GRANITE SHOALS**

• **Bluegrass and Gospel Jam**  
Last Sat: 6:30-10:00 pm  
706 Phillips Ranch Rd.

830-693-8408

## **THE GROVE**

• **Outside Pick**  
General Store, 15 mi. west of  
Temple on Hwy 36, Sat, 6 pm til...

M. Anderson 512-282-1215

## **HARWOOD**

• **Stage Show & Jam Session**  
3rd Sat, 9 mi. E. of Luling,  
Hwy 90, 2-9 pm,  
Ben Buchanan 512-263-7193

## **LULING**

• **Bluegrass Jam Session/Show**  
1st Sat every month, 200  
E. Travis, 4:00, 830-875-2917

## **LEAGUE CITY (BABA)**

• **Jam & Free Bluegrass Show**  
3rd. Sat: Jam 5pm, Show 6:30  
Jan-Nov, League City Civic  
Center, 300 W. Walker St.

713-990-5171

**LIBERTY HILL** 4th Saturday  
Jam Session at 1 pm  
until..... Hwy 29 West.,  
Contact Paula at 512-778-  
5410.

## **PARIS**

• **Jam & Stage Show**  
3rd Sat: Jam 5:00, Show 7:00  
Chisum HS, Hwy 19 & 24, south  
of Paris \$5-members \$6-others  
Brenda Burks 903-784-8859

## **PEARL**

• **Jam & Stage Show**  
1st Sat: Jam 12:00, Show 4:30  
Hwy 183, 7 mi. south of Purlmela  
Ronald Medart 254-865-6013

## **PFLUGERVILLE**

• **Hanover's Draught Haus**  
108 East Main St.  
**Sunday, noon-3 pm.**

**Trish and Kevin 512-251-9545**  
**ROCKNE** • **Bluegrass/Country**

## **Jam**

1st Sat: 3pm til ..., 8 mi. S. of  
Cedar Creek on FM 535

## **TOMBALL**

• **Spring Creek Club Jam/Show**  
4th Sat: 5pm-jam, 7pm-show  
Oklahoma Community Center,  
NE of Tomball 939-865-5250

## **SAN ANTONIO** • **Contra Dances**

3rd Sat: 7:30 pm, International  
Folk Culture Center at Our  
Lady of the Lake Univ.

512-434-6711, ext. 407

## **SOUR LAKE (Beaumont)**

• **Jam & Free Show**  
Southeast Tx BG Music Assn  
3rd Sat: 4pm, Elementary  
School, Hwy 326 S.

Edy Mathews 409-755-0622

## **WIMBERLEY** • **Bluegrass Jam**

Fri: 8-12 pm, Charlie's Cattfish  
Mike Bond (512) 847-2238



The Central Texas Bluegrass Association

P.O. Box 9816

Austin, TX 78766

